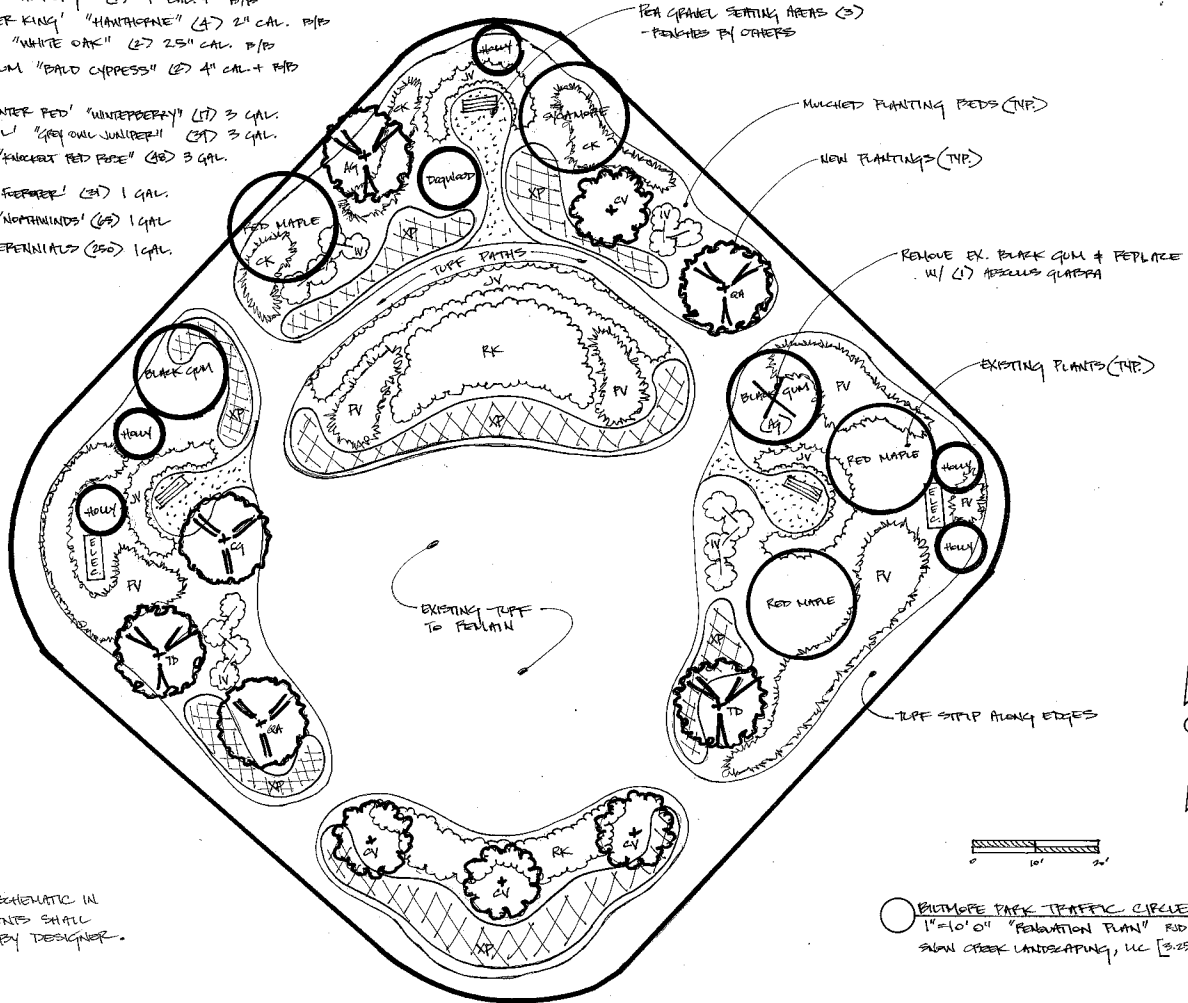


PLANT LIST

- AJ - *FRAXINUS QUERCIFOLIA* "YELLOW BUCKEYE" (2) 4" CAL. + B/P
- CQ - *FRAXINUS QUERCIFOLIA* "HICKORY" (1) 4" CAL. + B/P
- CV - *QUERCUS LAEVOFOLIA* "WINTER KING" "HANTROPANE" (4) 2" CAL. B/P
- RA - *QUERCUS ALBA* "WHITE OAK" (2) 2.5" CAL. B/P
- TD - *TAXODIUM DISTICHUM* "BALD CYPRESS" (2) 4" CAL. + B/P

- IN - *ILEX VERTICILLATA* "WINTER RED" "WINTERBERRY" (1) 3 GAL.
- JV - *JUNIPERUS HORIZONTALIS* "SPREADER JUNIPER" (2) 3 GAL.
- RK - *ROSA 'KNOCK-OUT'* "KNOCK-OUT RED ROSE" (2) 3 GAL.

- CK - *CALAMAGOSTIS 'KATY FERBER'* (2) 1 GAL.
- FV - *PANICUM VIRGATUM* "NORWINDS" (2) 1 GAL.
- XP - *ASOPETID NATIVE PERENNIALS* (25) 1 GAL.



\*NOTE: THIS PLAN IS SCHEMATIC IN NATURE. ALL ELEMENTS SHALL BE FIELD PLACED BY DESIGNER.

○ BIOTOPIC PARK TRAFFIC CIRCLE  
 1"=10' 0" "RENOVATION PLAN" FOR  
 SUNN CREEK LANDSCAPING, LLC [3.25.11]